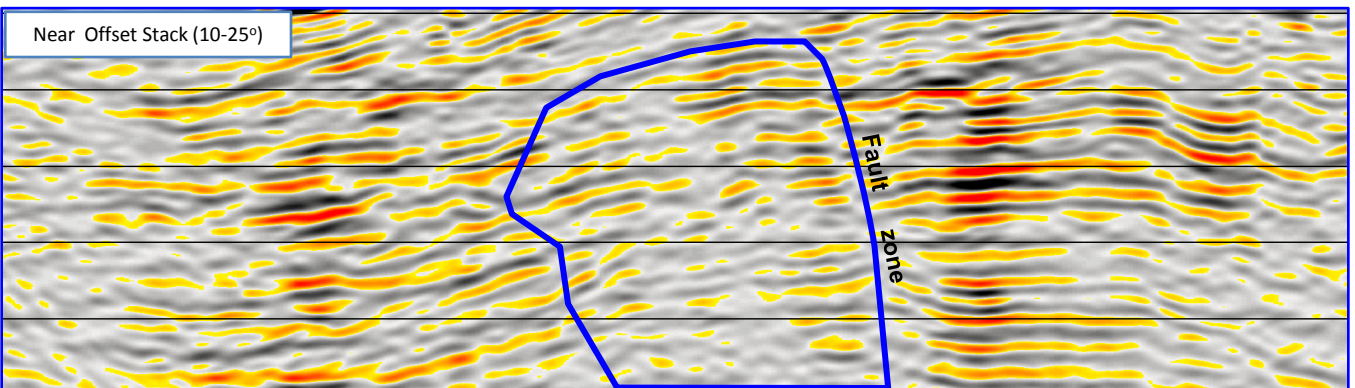
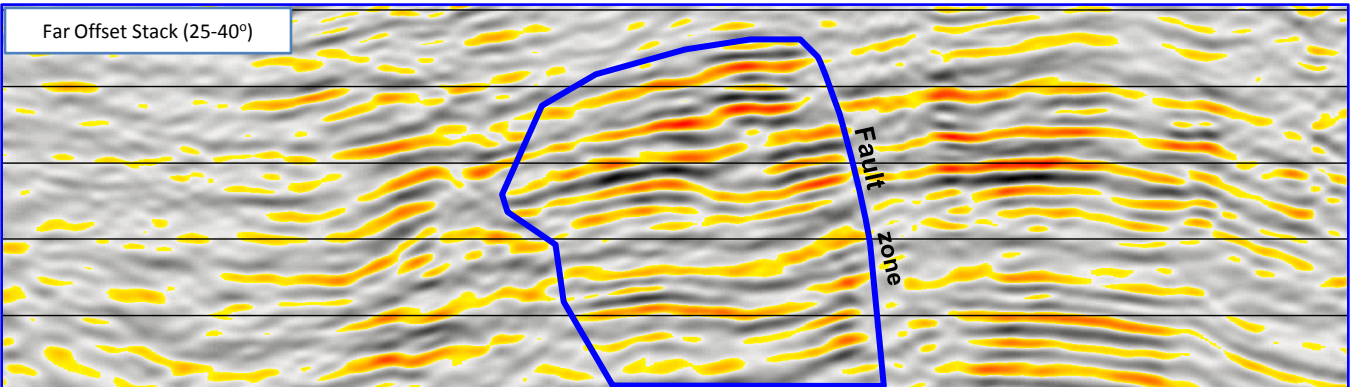
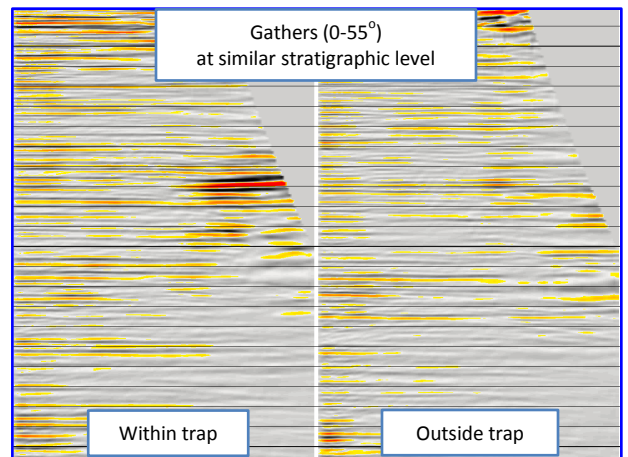
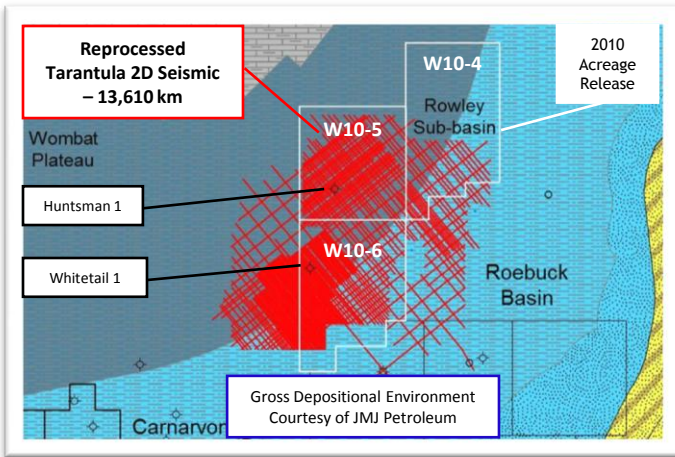


# Multi-Client 2D Seismic PSTM Reprocessing for 2010 Acreage Release - Roebuck Basin, offshore NW Australia

Several potential DHIs in the right geologic settings seen on the datasets



## Suite of high quality datasets for integrated prospectivity evaluation now available

- **Full stack** for confident prospect mapping and volumetric assessment
- **Gathers** for identifying and modeling AVO anomalies in the right place (potential DHIs)
- **Angle stacks** for confident mapping of DHIs to substantially reduce prospect risks
- **Regional database maps** generated by JMJ Petroleum to enhance confidence in prospect evaluation

**Contact:**

Christian Milne  
[christian.milne@cggeveritas.com](mailto:christian.milne@cggeveritas.com)  
 Mob: +65-9336-2595  
 Office: +65-6723-5728  
[www.cggeveritas.com](http://www.cggeveritas.com)

**Contact:**

John Whitcomb  
[john.whitcomb@mcgeophysical.no](mailto:john.whitcomb@mcgeophysical.no)  
 Mob: +65-9235-2668  
 Office: +65-6327-9744  
[www.mcgeophysical.no](http://www.mcgeophysical.no)