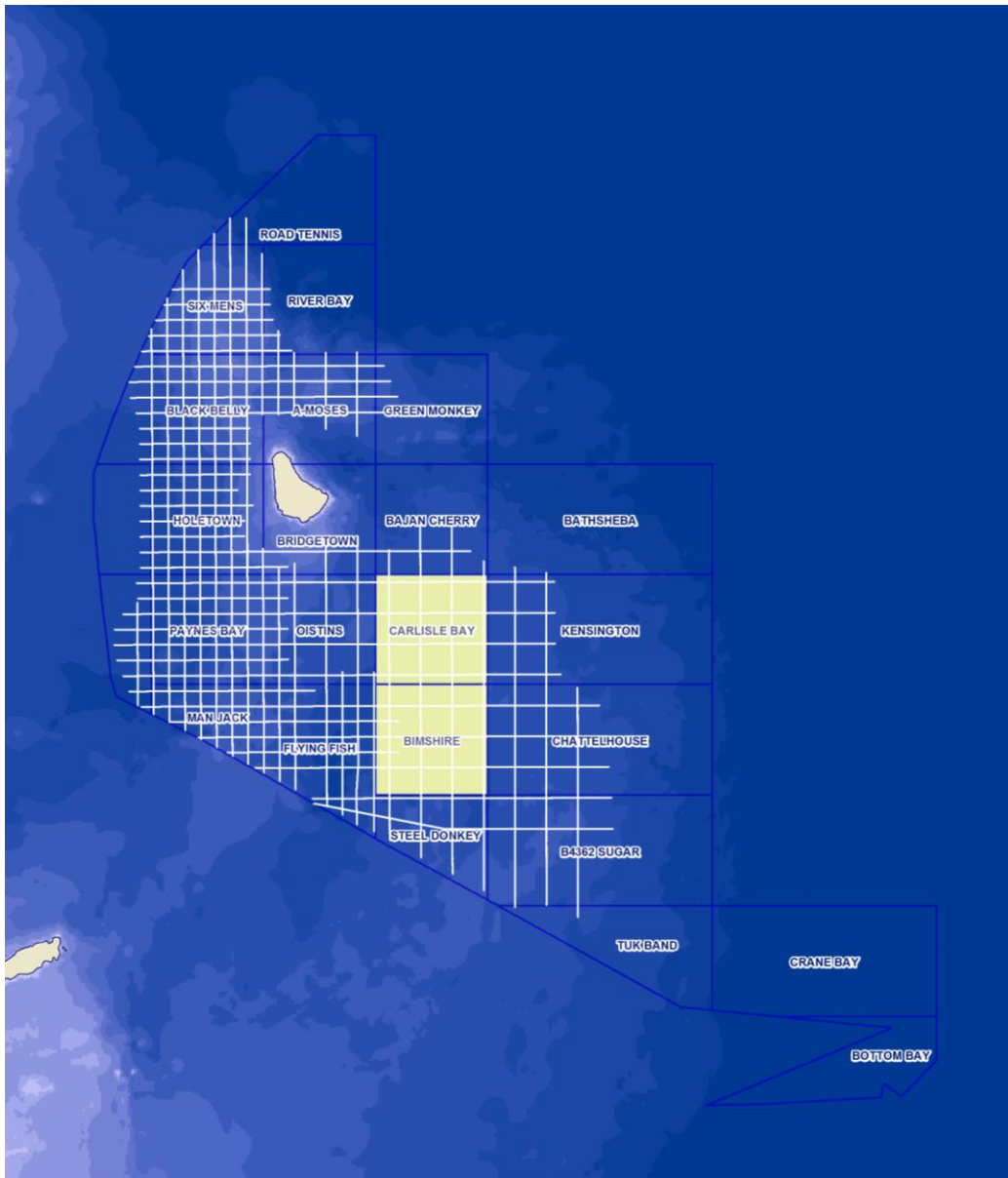




# MCG multiclient 2D Barbados

6,876 km long-offset high-quality MC2D



3,856 km available now

3,020 km available September 2013

10,500 m streamer length

4,230 in<sup>3</sup> energy source

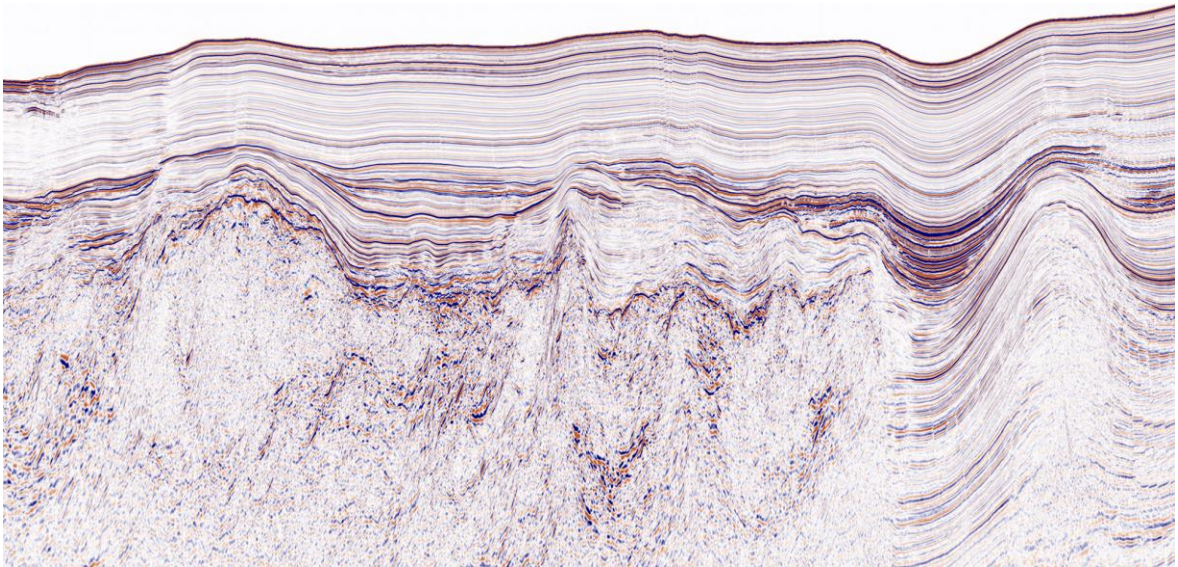
14 s record length



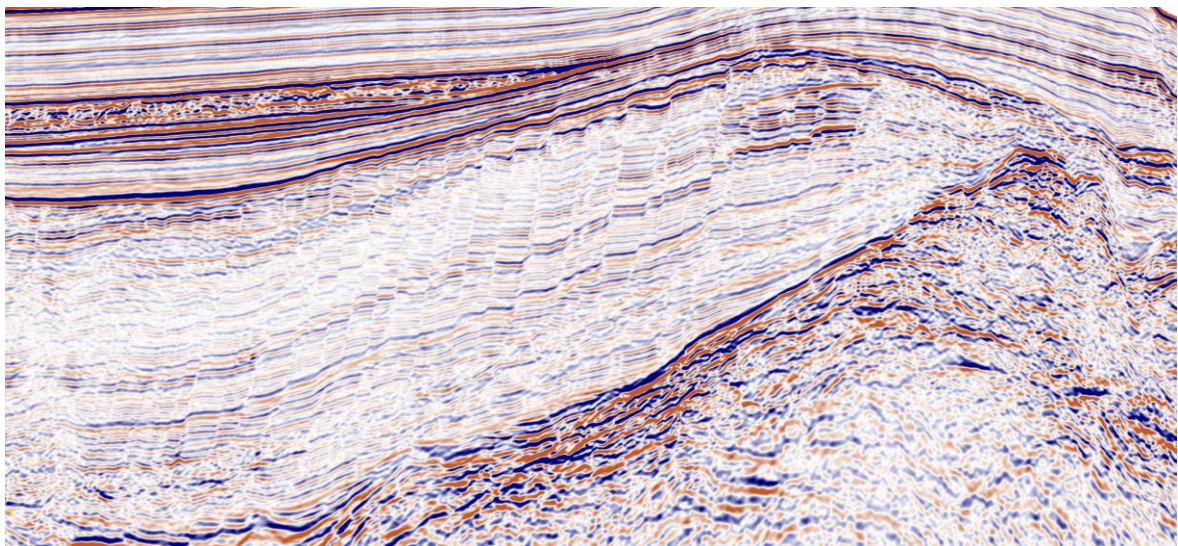
# MCG multicient 2D Barbados

## Seismic examples

Regional line from Tobago Basin



Detailed example from the Barbados Trough





# MCG multicient 2D Barbados

## Largely untested potential offshore Barbados

**MultiClient Geophysical ASA** has in cooperation with the Government of Barbados, acquired a modern long offset 2D seismic in the most prolific parts of the Barbados Offshore License Area. The survey covers the Barbados Through, the Tobago Basin and crosses the Barbados Ridge between the basins. The survey is designed to provide oil companies with an insight to the largely untested exploration potential offshore Barbados.

Barbados is currently producing oil onshore from the developed Woodbourne Field, proving the presence of a working petroleum system. Only one well has been drilled offshore Barbados, thus far. Sandy Lane #1/1Z well was drilled to depth of 15,074 ft in 6,975 ft of water in 2002, and a low-saturation methane gas in Miocene sandstones was discovered.

The result from the new seismic survey and existing wells in Barbados, suggest that there is a working petroleum system in place, comprising a source rock that is equivalent to that of the mature late Cretaceous La Luna Formation; Miocene, Oligocene and Eocene sandstone reservoirs; and multiple structural 4-way closures.

## Contact

**Tom Wolden**

tom.wolden@mcgeophysical.no  
+47 66 98 41 18  
+47 908 93 006

**Kenneth Mohn**

kenneth.mohn@mcgeophysical.no  
+1 (713) 485-9696

## Website

[www.mcgeophysical.no](http://www.mcgeophysical.no)



MultiClient Geophysical ASA