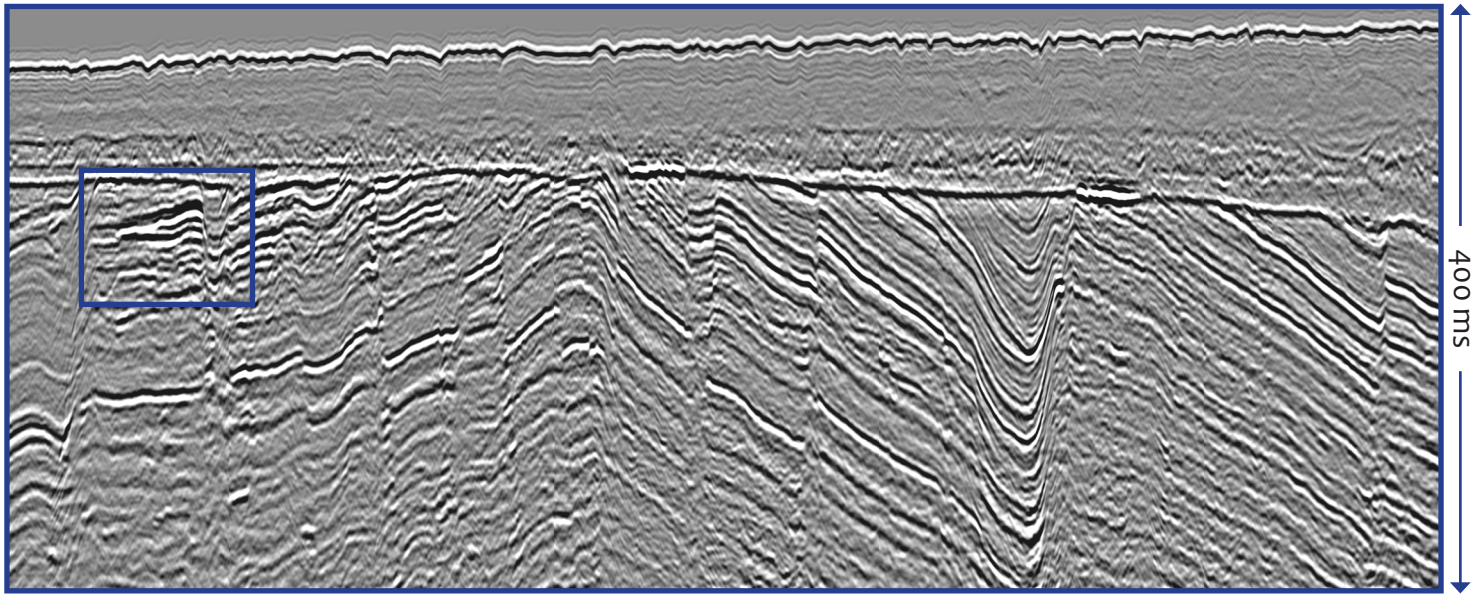
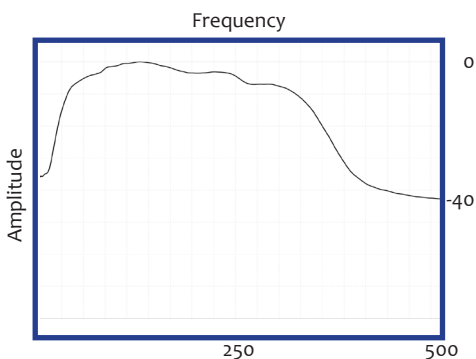


Super High Resolution Hoop

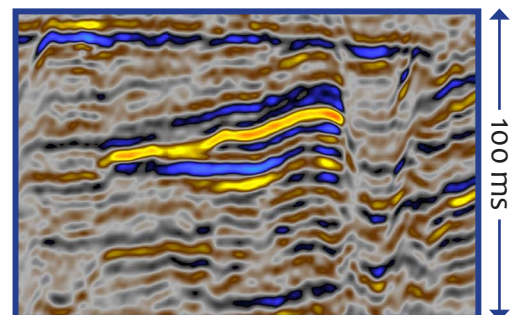
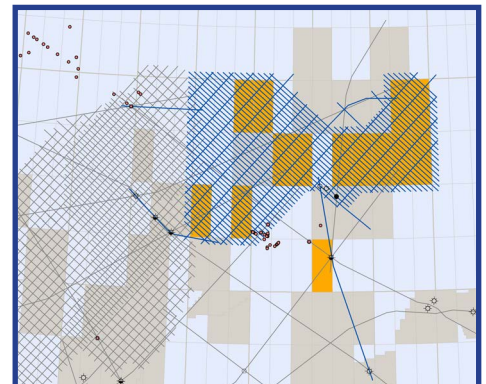


Detailed reservoir mapping

This specially designed 5 600 km super high-resolution 2D seismic survey in a 2 × 8 km grid gives detailed imaging of the shallow Cretaceous, Jurassic and Triassic prospects in the Hoop area of the Norwegian Barents Sea.



The survey is acquired with a 2 km streamer and is broadband processed at 1 ms. This gives the seismic data both ultra high resolution, which will resolve reservoirs down to 10 meters in thickness, and high-fold angles for advanced pre-stack analysis work.



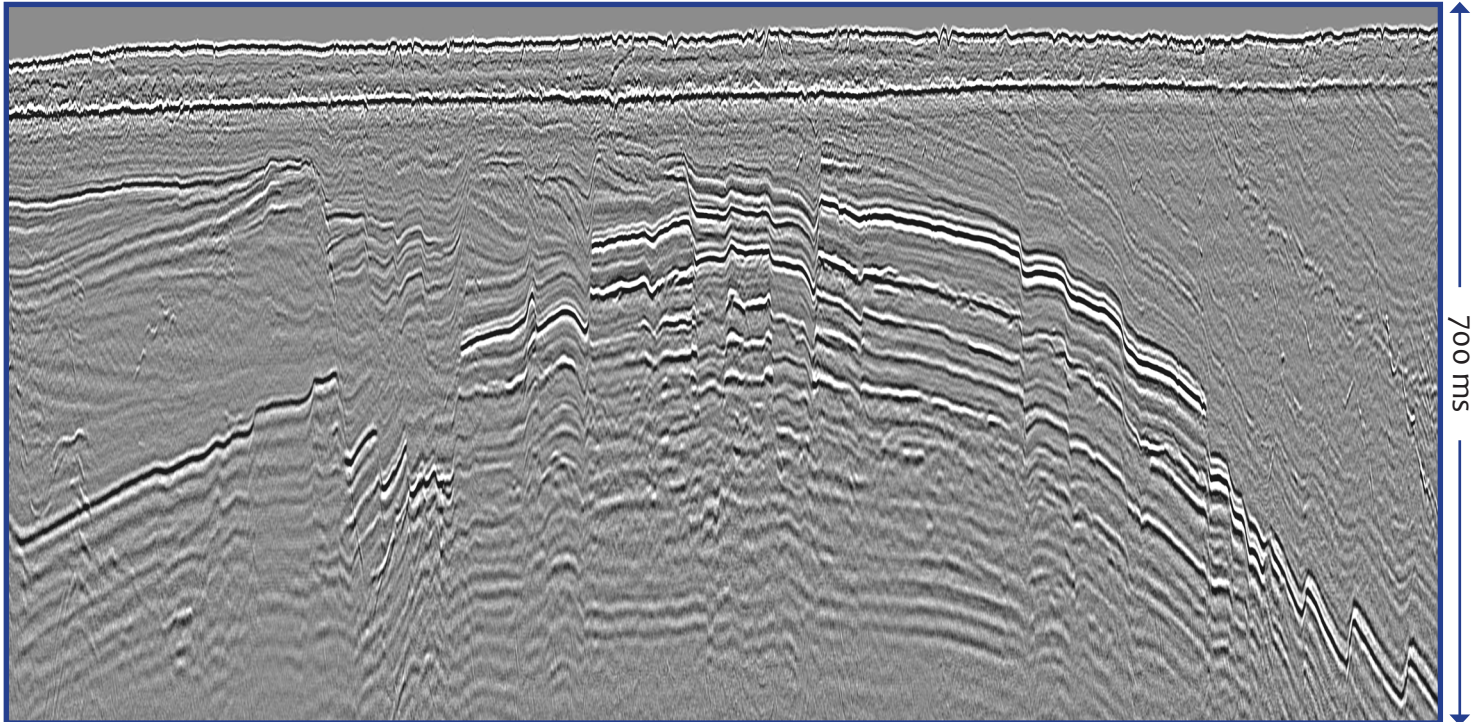
Please contact us for more information

Tor Åkermoen
tor.akermoen@mcg.no

Per Kulseth Dahl
per.dahl@mcg.no

Lars Ivar Leivestad
lars.ivar.leivestad@mcg.no

Super High Resolution Hoop



Acquisition specifications

- 2000 m streamer at 10 m depth
- 6.25 m receiver groups
- 1 ms sampling (i.e. up to 500Hz)
- Point source at 3 m depth
- 20 m in-line offset
- 6.25 m SP interval
- 2.5 sec recording
- 160 fold data
- ~60 fold data at shallow Jurassic reservoirs

Processing sequence

- Swell noise attenuation
- SRME
- SI attenuation and Linear noise removal
- Diffracted multiple attenuation
- Radon demultiple
- DUG Broad deghosting
- Debubble and zero-phasing
- PSTM
- Final enhancement

Please contact us for more information

Tor Åkermoen
tor.akermoen@mcg.no

Per Kulseth Dahl
per.dahl@mcg.no

Lars Ivar Leivestad
lars.ivar.leivestad@mcg.no