

THE GREATER CARIBBEAN BASIN SYNTHESIS

More than 18,000 km of exclusive newly reprocessed (2025) datasets now available near the Orinoco Delta, Perla and Dragon fields

The Greater Caribbean Basin Synthesis is a multi-phase exploration project spanning several countries, designed to map the full offshore potential of the region.

The first set of data—comprising three newly reprocessed datasets—forms parts of a larger campaign offering access to approximately 40,000 km of 2D seismic and 4,500 km² of 3D seismic data at favourable rates.

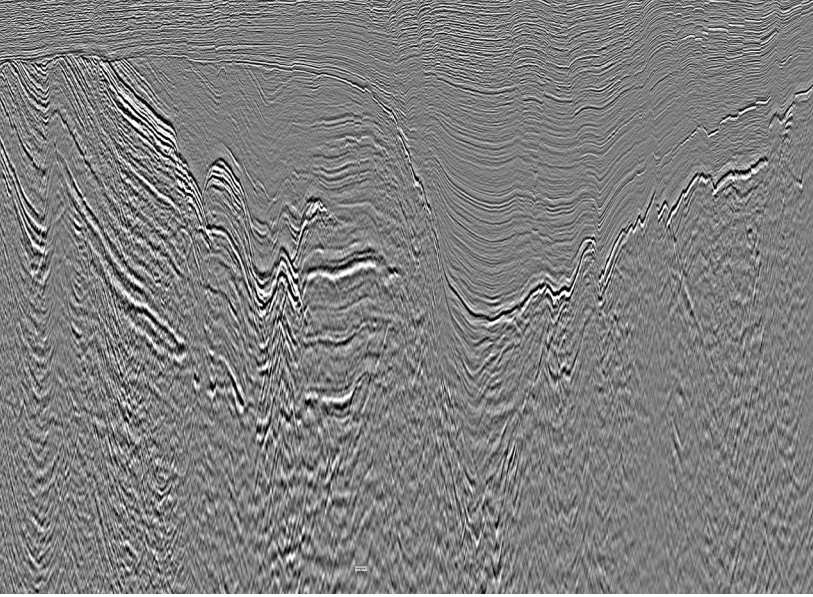
In partnership with DUG, our ongoing reprocessing work is focused on illuminating offshore gas accumulations and identifying key prospects of interest. Whether you're expanding your regional strategy or entering new acreage, this basin-wide synthesis offers unmatched insight and value for exploration decision-makers.

Data is available for viewing by request:

Jean-Philippe Rossi, EVP
jp.rossi@geoexmcg.com

Learn more at www.geoexmcg.com



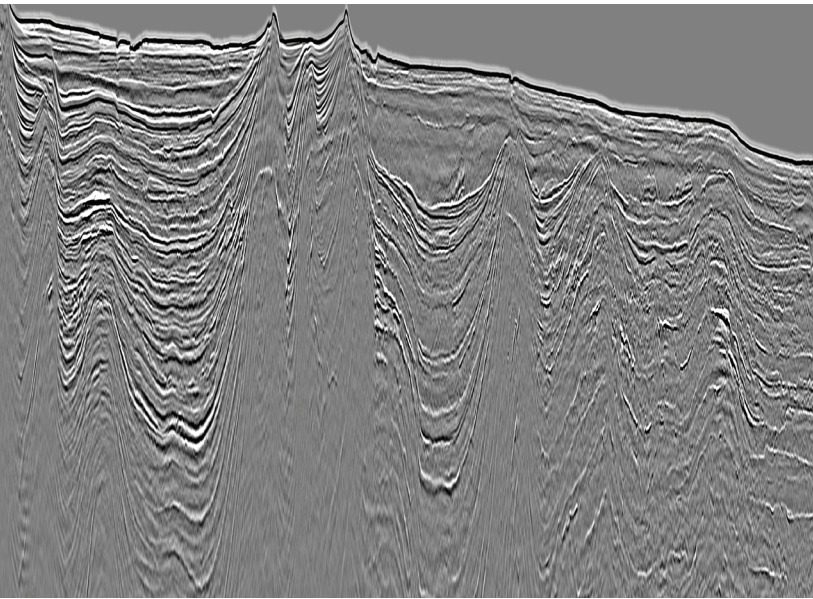


Golfo 89C



5,451 km – Reprocessing of this survey has better elucidated the formations associated with the **Perla discovery**. 17 TCF of gas was located in Oligo-Miocene carbonates charged by a Tertiary source rock—a different petroleum system to that of the prolific Maracaibo Lake which relies on the Late Cretaceous, La Luna interval.

Similar carbonate type structures have been seen within the dataset which has potential exploration implications for further gas discoveries.



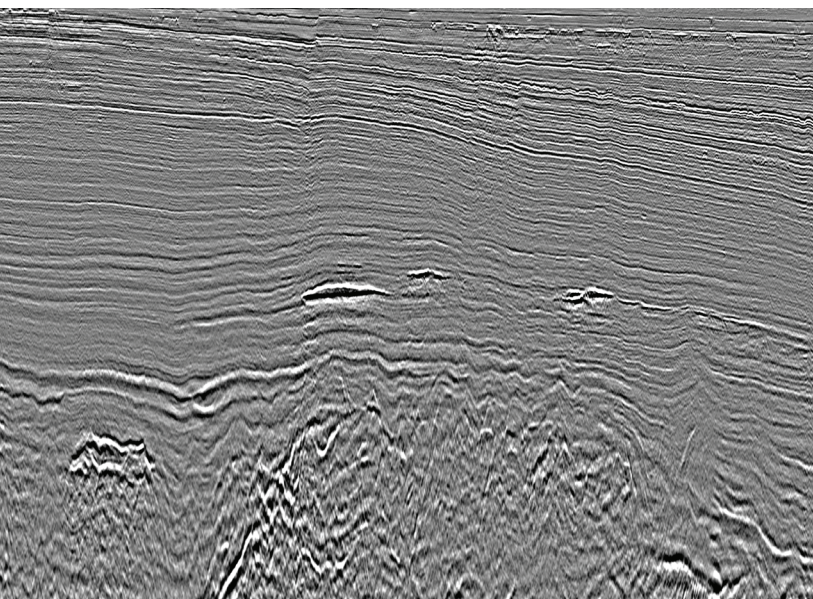
Delta Amacuro 80B



4,959 km – The Delta Amacuro region has been significantly underexplored despite several fields being discovered in close-proximity.

This newly reprocessed data seeks to improve the understanding of the deposition and subsequent hydrocarbon potential of the region with numerous self-similar structures identified to the recently **confirmed FID by various operators**. The discoveries to date have been found in moderately deep water within shallow targets proving an encouraging likelihood to development.

Furthermore, this area has excellent infrastructure for potential tie-backs to bring discoveries on stream in shorter time frames, namely the **Atlantic LNG facilities**.



Norte de Paria 80B



7,981 km – Located in close proximity to the **Dragon, Hibiscus & Rio Caribe gas discoveries**, this reprocessing has aimed to better image the Mio-Pliocene intervals associated with these fields whilst also providing a regional picture.

The existing data, first shot in 1980, has been rejuvenated with modern processing algorithms to provide a clearer image of the complex regional and stratigraphic relationships in the **Carupano Basin**. The domal structures associated with these discoveries have been evaluated in more detail which will provide a key tie point for evaluating similar structures in close proximity.

Furthermore, this area has excellent infrastructure for potential tie-backs to bring discoveries on stream in shorter time frames, namely the **Atlantic LNG facilities**.